



LOLA

**LONDON ON-LINE LOCAL AUTHORITIES
REPRESENTS THE MOST ADVANCED COMPUTER PROJECT IN
LOCAL GOVERNMENT IN THE UNITED KINGDOM**

**Tower Point North
Sydney Road
ENFIELD
Middlesex EN2 6UE 01 366 6411**

BACKGROUND

The four London Boroughs of Hackney, Haringey, Hillingdon and Tower Hamlets have a total population of about one million and an annual rateable value in the region of £60 million, comparable to that of Birmingham.

Present day demands upon local government for services to their residents require the collection, analysis and use of vast and increasing amounts of information, too much to be dealt with except with the aid of the fast data handling characteristics of electronic digital computers.

A LEO III computer has been in use since 1966 and, although its applications are advanced of their kind, it has reached its limit of development and has some severe limitations in its capabilities.

The IBM computer at Enfield has fast main storage and very large capacity direct access backing storage, supported by sophisticated operating programs.

During the day Council Officers are able to rapidly interrogate information held in the computer instead of on paper or on cards as hitherto — there will be much less need for paper files and records.

They are also able to amend this information so that it is constantly up-to-date. And, since the computer system uses the "data-base" concept of information handling, i.e. each fact only held in one place, rapidly accessible for all applications (subject to security provisions), there is much less likelihood of error and delay, together with improved provision of information for decision making.

The terminals used are visual display units (VDUs) which are easy, fast devices permitting immediate i.e. on-line "conversation" with the computer. Officers key in requests for information and quickly receive replies, enabling them to answer queries, provide reports, and amend information on the spot. The design of the computer programs makes the machine do most of the work leaving the Officers to concentrate on the important features of the information process. The removal of the need to have cards punched for any except periodical reports, also greatly reduces errors and delays.

Periodical summaries, reports, and lists which must still be maintained are printed at Enfield during the night for sending to the Council Offices next day.



ABOUT THE COMPUTERS

Until 1st October 1972, London On-Line Local Authorities (LOLA) was part of the London Boroughs' Management Services Unit which pioneered the development of joint user computer schemes for Local Government and has planned, programmed and implemented such schemes since 1959.

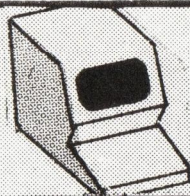
LOLA operates a LEO III computer installation at Hackney (due to close in April 1974) which services the London Boroughs of Hackney, Haringey, Hillingdon and Tower Hamlets. This machine has 16,384 words of store and 6 magnetic tape decks. Present operational systems include an integrated accountancy system embracing expenditure (payroll, payment of creditors, stock and transport control) and income (rates, housing rents and other debtors). Non-financial applications include questionnaire analysis and vaccination and immunisation records.

The present IBM 360/50 at Enfield, which will take over all LEO III operations, comprises 512K bytes of storage and peripherals including two mass storage 2314's. Video display units are in use giving direct on-line communication with Council offices, facilities to interrogate and to amend computer records directly, and access to centrally indexed records whereby all activities for any one person, property or resource are co-ordinated. A computer of larger capacity is due to be delivered in July 1973.

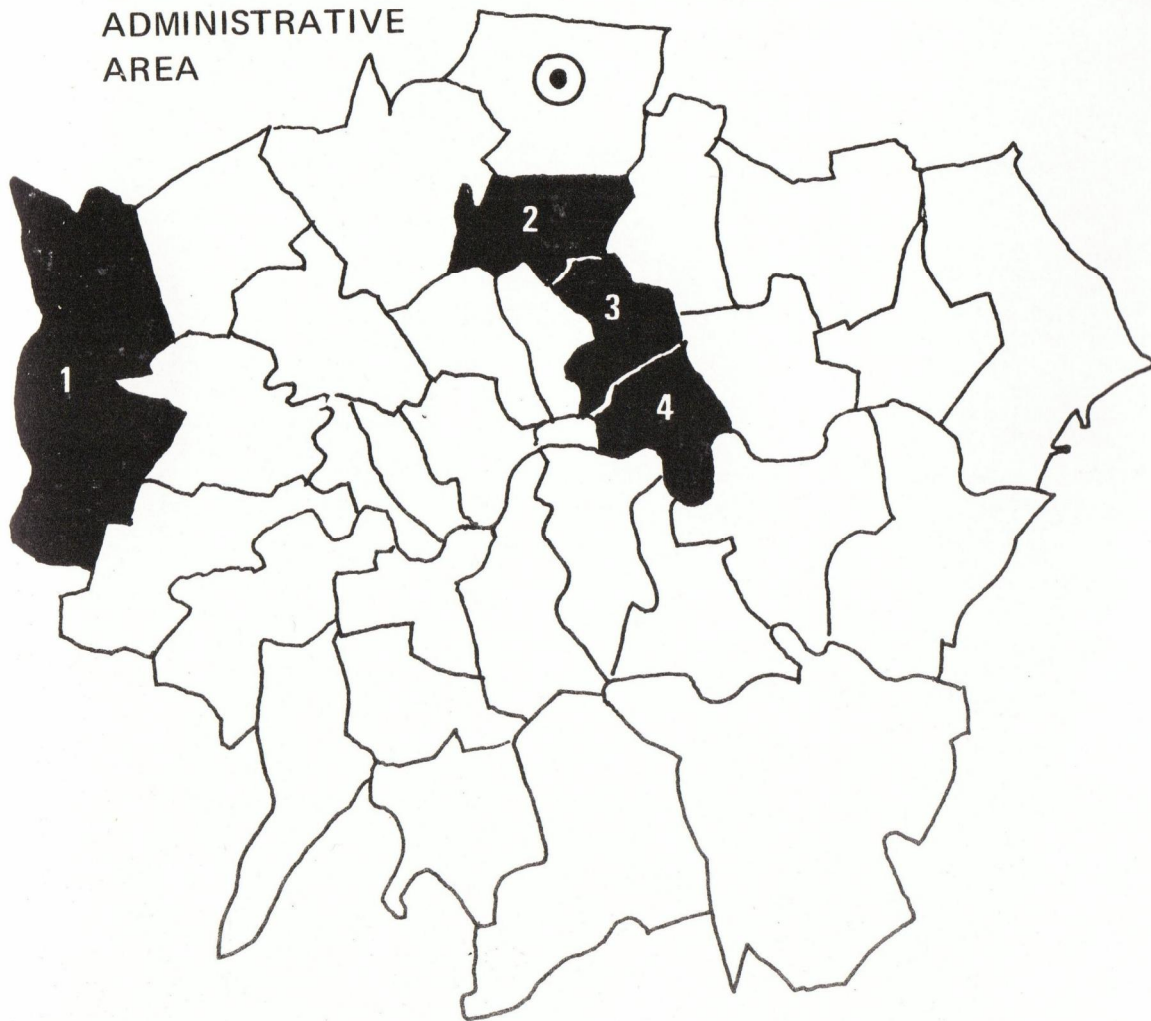
LOLA

AT ENFIELD

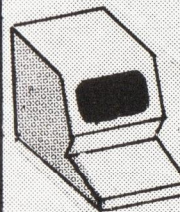
1



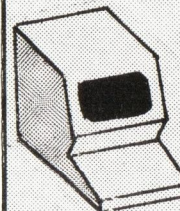
GREATER LONDON
ADMINISTRATIVE
AREA



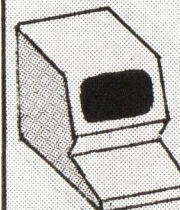
2



3

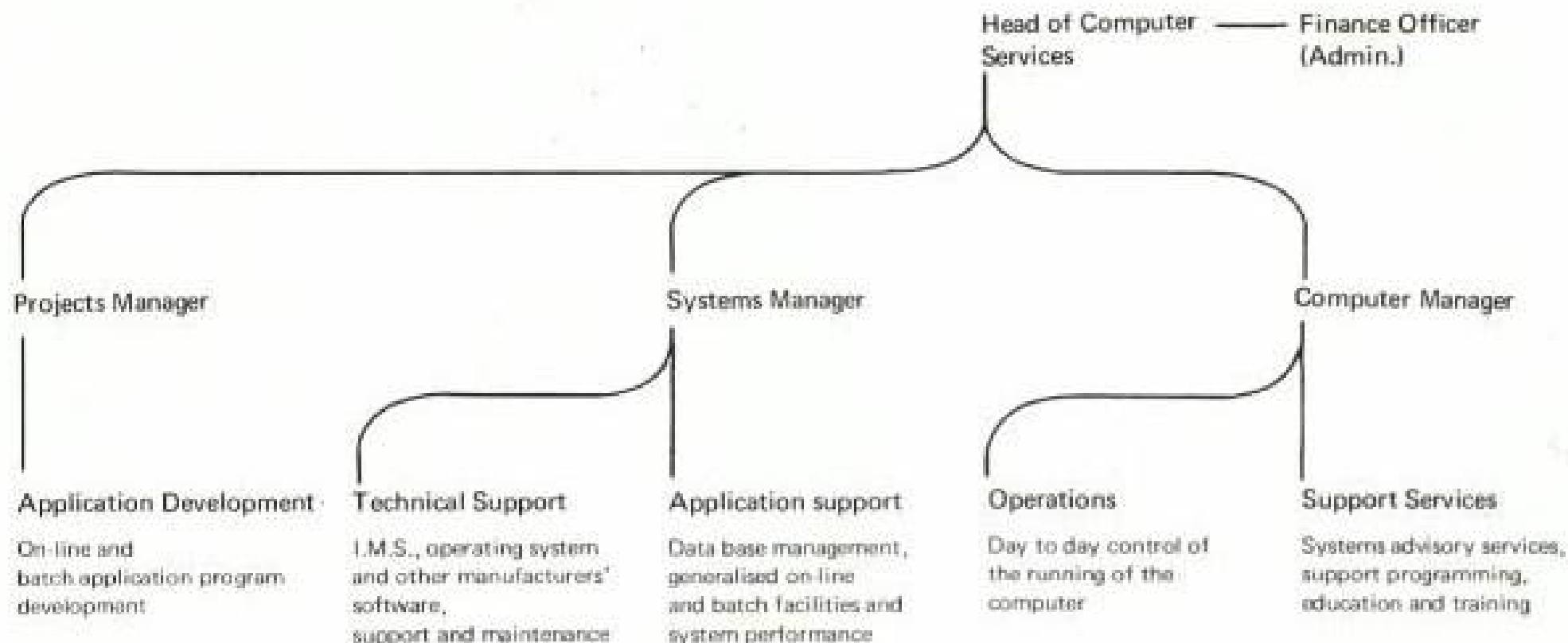


4



1. Hillingdon
2. Haringey,
3. Hackney
4. Tower Hamlets

THE SET~UP



Overall, more than 130 staff are involved with an annual budget of over one million pounds.

Director of Computer Services

Controller of Finance and Administration

Projects Manager

Systems Manager

Computer Manager

D A Schartau, BSc, FBCS

C A Stebbing, FIMTA, FRVA

H Pearman, MBCS

A J O'Brien

J C Sheldrick, ACIS, MBCS

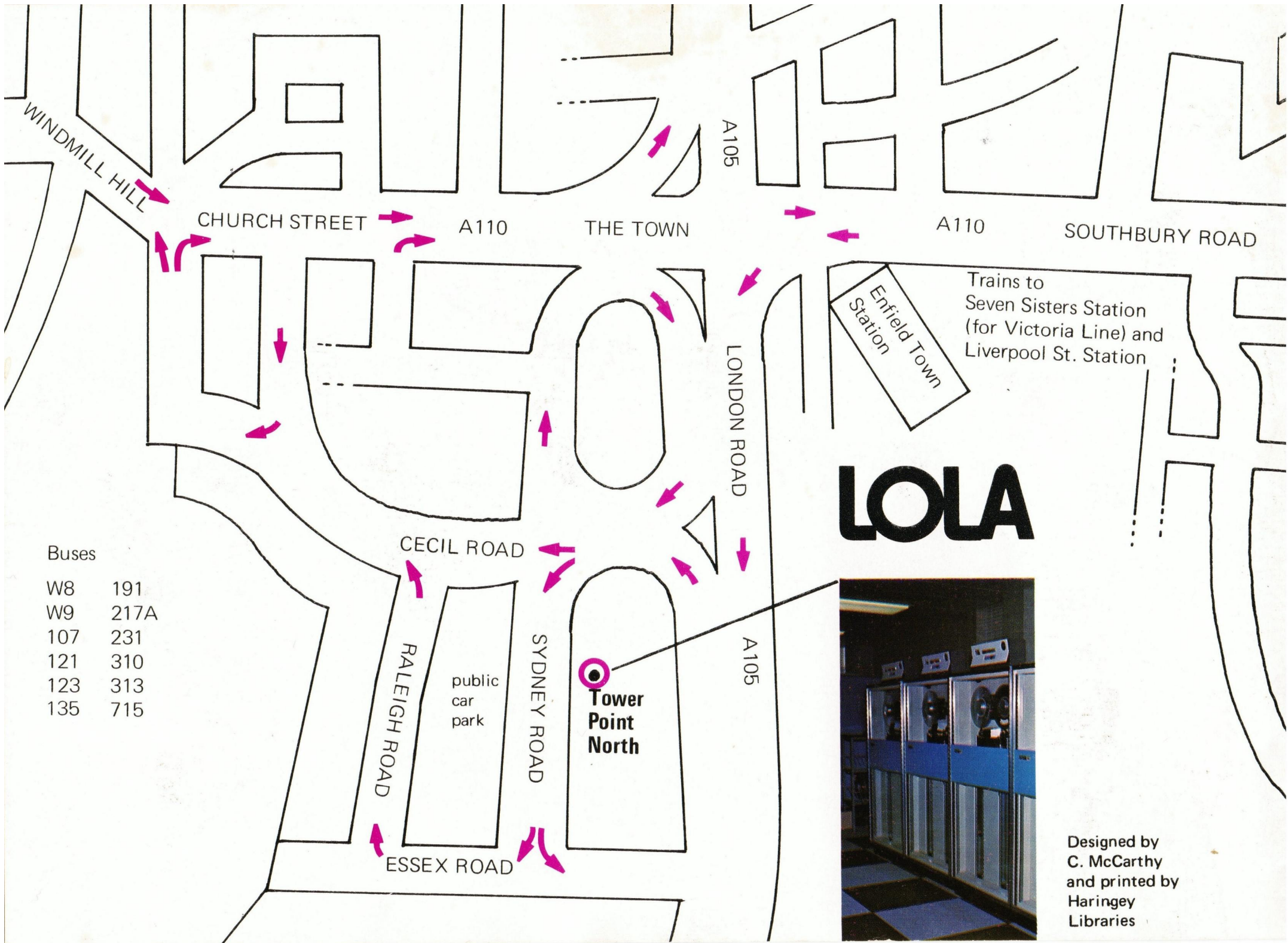
STAFF

LOLA staff participate in a wide range of non-computer activities outside working hours under the able direction of the Sports & Social Club Committee. The Sports Section is very active and caters for a wide variety of interests including squash, table tennis, golf, football, cricket, horse riding, swimming and darts. Social events are organised frequently and include discotheques, cheese & wine parties, car rallies, etc. etc.

A staff magazine, LOLA NEWS, is published once monthly and covers matters of general interest to LOLA employees. Among those items which are featured regularly are NALGO news, technical information, and sporting and social activities.

LOLA has its own branch of NALGO (National Association of Local Government Officers) which negotiates matters affecting staff, i.e. conditions of service, directly with the employers' side.





Buses

W8	191
W9	217A
107	231
121	310
123	313
135	715

Designed by
C. McCarthy
and printed by
Haringey
Libraries